

# Landmark Parents Association

Bi-Monthly Parent Newsletter

June 18, 2010  
Volume 3, Issue 18

## What's inside

Lifetouch Photos

Summer Programs

LPA President's Report

## GRADUATION AND EMS TRANSITION PHOTOS AVAILABLE NOW!

Graduation photos for the Senior Class of 2010 and EMS Transitioning students are now available online to preview and purchase.

To view and order photos from Lifetouch, follow these three easy steps:



- 1) Go to [www.lifetouchevents.com](http://www.lifetouchevents.com)
- 2) For High School photos enter Guest Password: LNDMRK10  
For EMS Transition photos enter Guest Password: Indmrkms10
- 3) Order and pay for your photos

All proceeds go to Lifetouch (Landmark does not receive any compensation).  
Enjoy the photos and the wonderful memories!

Photos will be available for viewing and purchase for 90 days after the day of the event.  
If you would like a photo to be removed from the site contact:  
[removephoto@lifetouchevents.com](mailto:removephoto@lifetouchevents.com)

## SUMMER ENRICHMENT SEMINARS FOR ALL STUDENTS

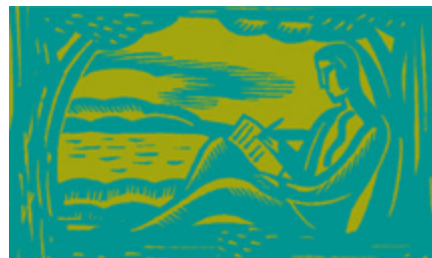
Get a jump start to the school year. These two-week summer enrichment seminars are designed specifically for students at public or private middle school, high school, or college, who do not necessarily have a diagnosed learning disability, and are looking to use the summer to improve and strengthen skills.

### Session I • July 5 - 16

- Study Skills for High School Students
- Study Skills for College Students
- Math Study Skills • Pre-Algebra/Algebra

### Session II • July 19 - 30

- Study Skills for High School Students
- Developing Essential Writing & Study Skills for Middle School Students



## Liaison to the LPA

Lisa Robinson  
978-236-3205

[lrobinson@landmarkschool.org](mailto:lrobinson@landmarkschool.org)

P.O. Box 227

Prides Crossing, MA 01965

Learn more at <http://www.landmarkschool.org/summer-programs/summer-seminars>  
or contact Program Director, Colleen Kelleher at 978-236-3257, or  
[ckelleher@landmarkschool.org](mailto:ckelleher@landmarkschool.org)

## LPA President's Report

Well, as we close the books for another year, I thought it would be a good idea to recap some of the LPA events. We raised just over \$6,000 from our fundraising efforts (wrapping paper, coffee, spirit-wear sales, and Jalapeno's nights), which resulted in \$1,000 over budget. We were almost \$1000 under budget on our dues collection; (Budget: \$9,000 Actual due collected: \$8,190). Thank you to everyone one for supporting the LPA through dues and fundraisers.

Now you may ask where did that money go?

Here are highlights of how your contributions were spent in round numbers:

Cultural Enrichment at EMS -	\$3000 (Phunk Phenomenon and a story teller)
Interdisciplinary Day Fund HS -	\$1500 (High School Saturday school diversity program)
EMS Discretionary funds -	\$1000 (supported the End of Year Carnival/cookout)
HS Discretionary Funds -	\$2000 (electronically controlled 10' x 6' screen and a projector)
Holiday Gifts given to staff-	\$ 850 (facilities staff including crossing guards, etc)
New Parent Teas HS and EMS	\$ 80 (welcomes incoming families)
Performing Arts Support	\$ 250 (donation)
Four Scholarships to seniors	\$2000 (Outstanding Achievement Awards)
Staff Appreciations Events	\$6000 (luncheons and raffles for EMS and HS staff)
Student Council HS and EMS	\$ 100 (donation)
Transition Ceremony EMS	\$ 400 (photo of transitioning students and frames)
Valentine's Day ice cream parties	\$ 400 (HS and EMS)
Parent Education	\$ 400 (two seminars/workshops)

The remaining money went towards our expenses and the reserve funds.



Cultural Enrichment:  
Phunk Phenomenon  
Performance at EMS

HS Performing Arts:  
"Revenge of the Space Pandas"



EMS Discretionary Funds:  
End of Year Celebration -Carnival and Cookout



LPA Parent Education:  
Kirsten Olson presents  
“Recapturing the Joy in Learning”

We do have one more exciting way we've spent our funds this year. Since we anticipated a short fall in our fundraising, early on we cut our spending. This fiscal responsibility coupled with a few small fundraisers and your additional generosity ended in a surplus of \$3500. At our final meeting in June, we voted to donate those funds to the EMS. The EMS is in need of a projector for the meeting room. This money will allow for the purchase of a new projector that will benefit the entire Landmark community.

I can't forget to mention that the Parent Education Committee hosted two very successful seminars and workshops, including Kirsten Olson (Recapturing the Joy in Learning) and Janet Parady (Writing and Students with LBLD– To Paragraphs and Beyond!). We also had several well attended social outings including a trip to the MFA and a tour of Chinatown. The LPA hosted Valentine's Day ice cream parties at both campuses and new parent teas welcoming new families to Landmark.



LPA Meeting:  
Looking forward to seeing you at the next LPA meeting on Monday,  
September 13, 2010 at 8:00 am in the Drake Administration building.

We should all be proud of the hard work we do as parents both supporting our children and the Landmark Community! Thank you again for your continued generosity and loyalty. It's been a pleasure representing the LPA, and I look forward to another great year in the fall.

Have a wonder, relaxing, and safe summer break!

Warmest Regards,

Kim Cole P'17  
LPA President